

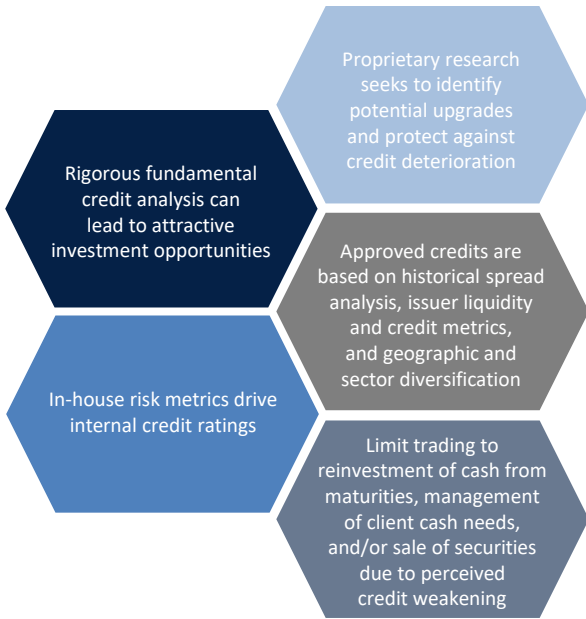
ABOUT APPLETON

- Founded in 1986 and located in Boston, MA
- 100% employee owned and operated
- Collaborative, team-oriented culture marked by personnel continuity
- Commitment to private client wealth management and financial planning
- Personalized, high-touch client service backed by recognized asset management expertise
- Entrusted with over \$9.6 billion of investor assets as of 12.31.18

STRATEGY OVERVIEW AND OBJECTIVE

- Seeks to provide consistent, tax-exempt income through a high quality, laddered municipal bond portfolio
- Exclusively invests in high investment grade tax-exempt municipal bonds with maturities of 1 to 10 years
- Looks to reduce interest rate volatility by holding bonds to maturity and reinvesting proceeds in a manner that maintains the overall portfolio maturity structure
- Will not invest in callable bonds or bonds subject to AMT

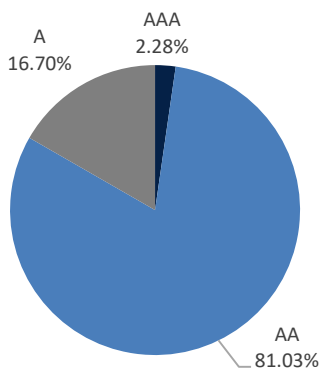
INVESTMENT PHILOSOPHY & PROCESS



INVESTMENT GUIDELINES		TARGET PORTFOLIO CHARACTERISTICS**	
Maturity Range	1 – 10 Years	Average Maturity	5.26 Years
Annual Trading	Passive Strategy – Low Turnover	Average Duration	4.49 Years
Credit Quality Target	High Investment Grade, Minimum A- credit rating at time of purchase	Average Coupon	4.89%
Geographic Diversification*	National or State Preference: CA, NY, MA	Yield to Maturity	2.12%
Average # of Holdings	5 – 15	Current Yield	4.32%
Investment Timeframe	30 – 60 days	Average Price	\$113.11
Minimum Investment	\$250,000	Average Annual Turnover	10%

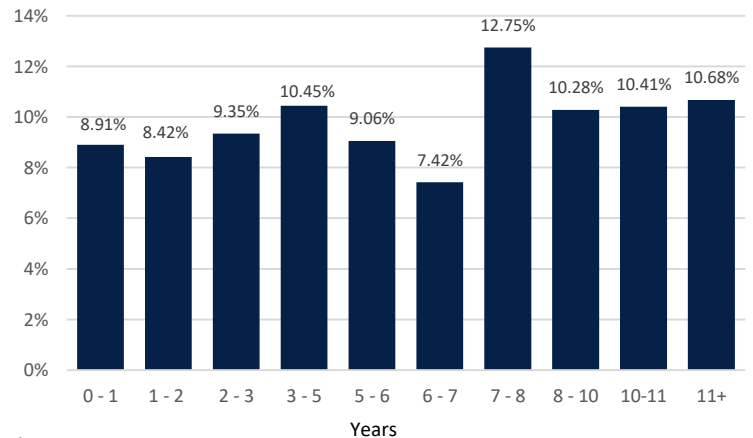
Source: Appleton Partners, Inc.

CREDIT PROFILE\*\*\*



Source: Appleton Partners, Inc.

MATURITY PROFILE



\*% of state exposure dependent on availability of bonds in state of residence. 100% in-state exposure for certain states upon request.

\*\*Target Portfolio Characteristics are based on target national portfolio profile data and characteristics as of 12.31.18 and was selected because it is most similar to the prospective client type and anticipated investment strategies to be employed.

\*\*\*Credit Profile: AAA includes cash and pre-refunded bonds.



One Post Office Square, 6<sup>th</sup> Floor  
 Boston, MA 02109  
[www.appletonpartners.com](http://www.appletonpartners.com)

Appleton Partners Composite data as of 12.31.18; source: Appleton Partners, Investortools: Perform, and/or Bloomberg Finance L.P. Evaluations and market averages subject to change based on market conditions. This piece is intended for informational purposes only, and not to suggest any specific performance or results, nor should it be considered investment, financial, tax or other professional advice. Investors should be aware that the referenced benchmark funds may have a different composition, volatility, risk, investment philosophy, holding times, and/or other investment-related factors that may affect the benchmark funds' ultimate performance results.